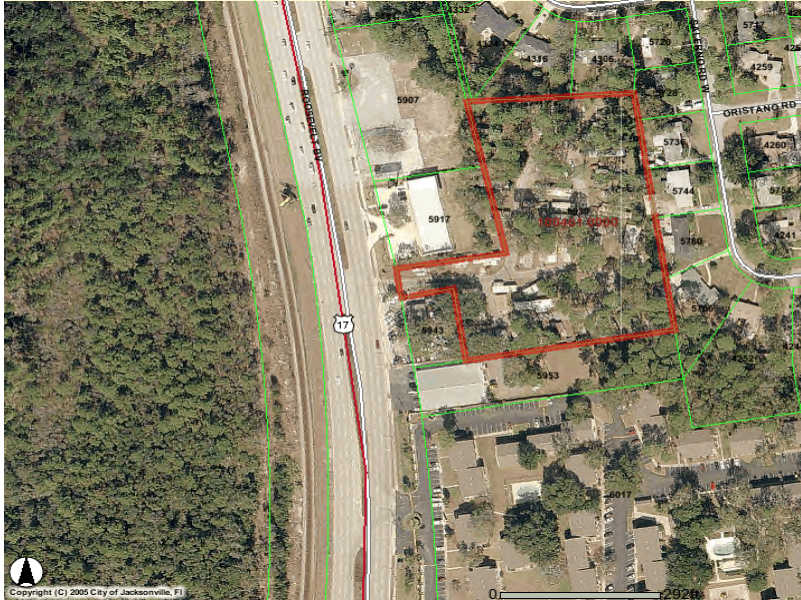


JACKSONVILLE, FL **COMMERCIAL LAND FOR SALE**



Approximately 3.9 acres of land located at 5939 Roosevelt Blvd., Jacksonville, FL 32244. Former mobile home park has a full median cut on Roosevelt and no wetlands. Less than a minute from Naval Air Station Jacksonville. Site is zoned CCG-2, which allows for the widest range of commercial uses including hotel and self storage.

TRAFFIC COUNT

48,000 CPD

SALES PRICE

\$795,000

SILVERFIELD CRANFORD COMMERCIAL REALTY, INC.

10175 Fortune Parkway, Suite 1005

Jacksonville, Florida 32256

904-519-9545 / Fax: 904-519-9546

silverfieldgroup@bellsouth.net

www.silverfieldgroup.com

LICENSED REAL ESTATE BROKER

Note of Disclaimer – Details contained herein are believed to be correct; however, they are subject to errors, omissions, price change, or withdrawal without notice.