

PERIMETER PARKWAY OUTPARCELS



Located at the I-295 and Pritchard Road Interchange



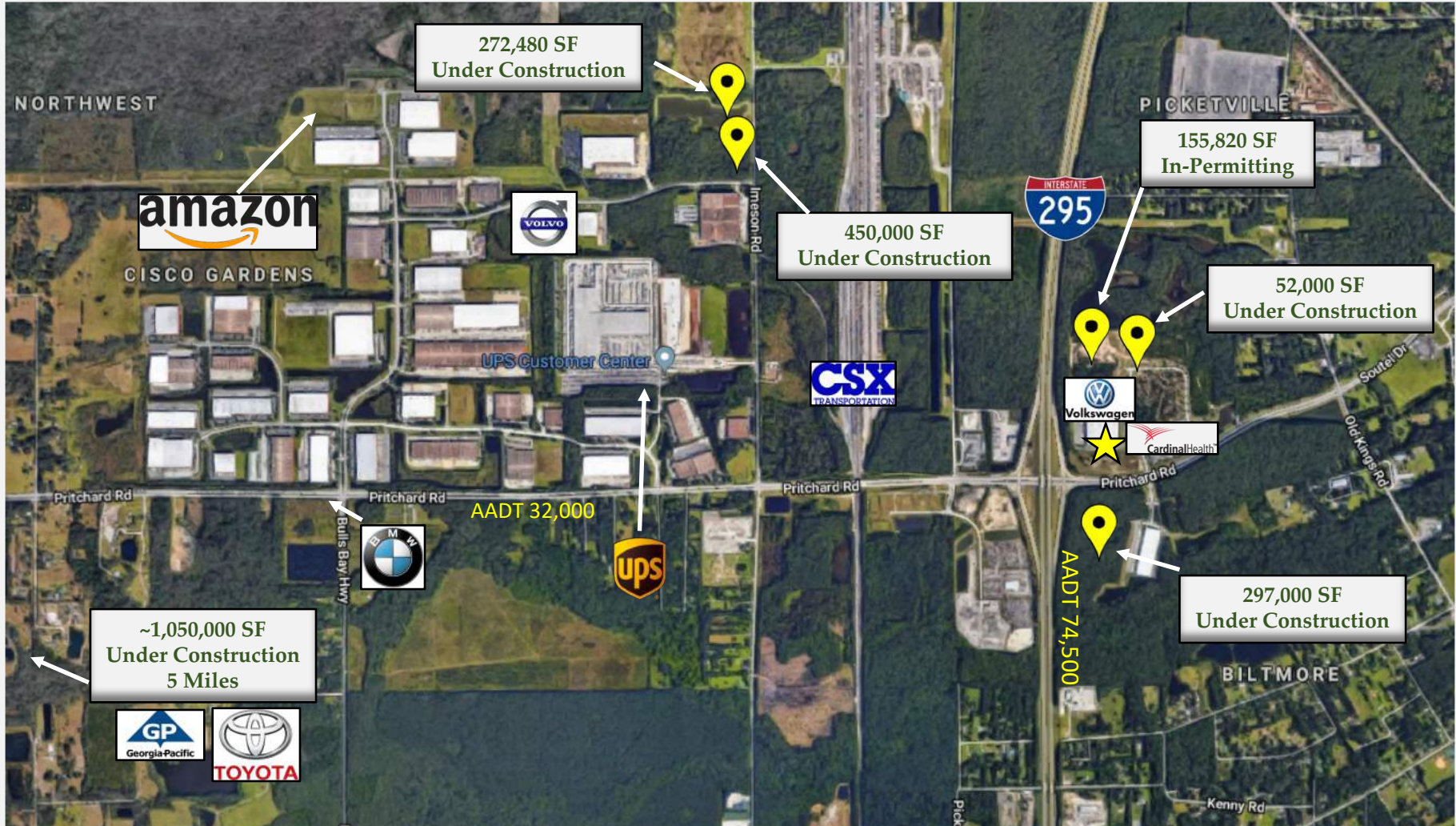
- 6.15 usable commercial acres
- Off-site retention
- To-be-delivered: Cleared/Filled
- Zoned and Entitled
- Utilities to Site
- Will Sub-Divide
- +/- 2.6MM SF of new/planned industrial w/in 2 miles
- Two RI-RO access points



PERIMETER PARKWAY OUTPARCELS



New Development



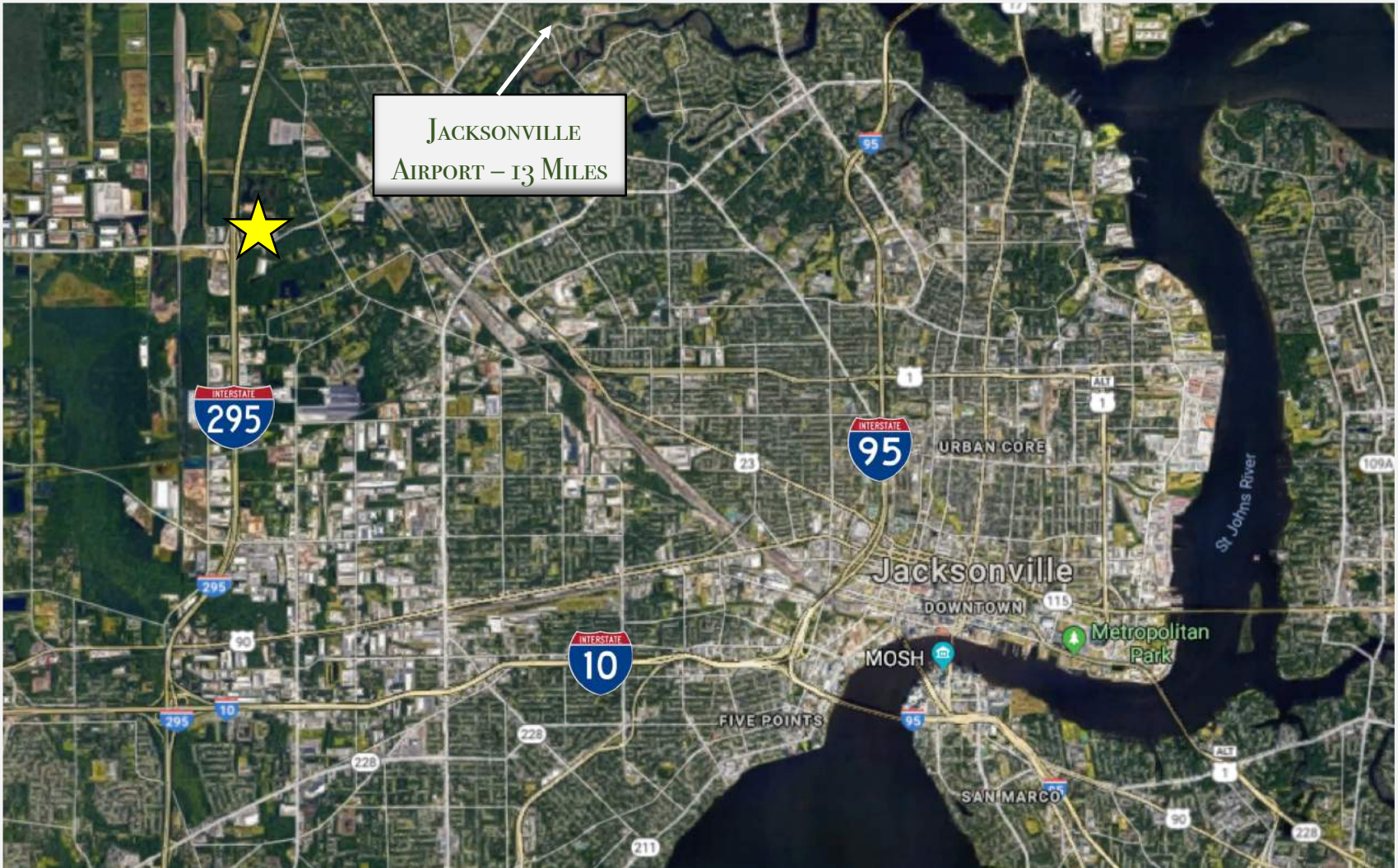
★ Subject Property



PERIMETER PARKWAY OUTPARCELS



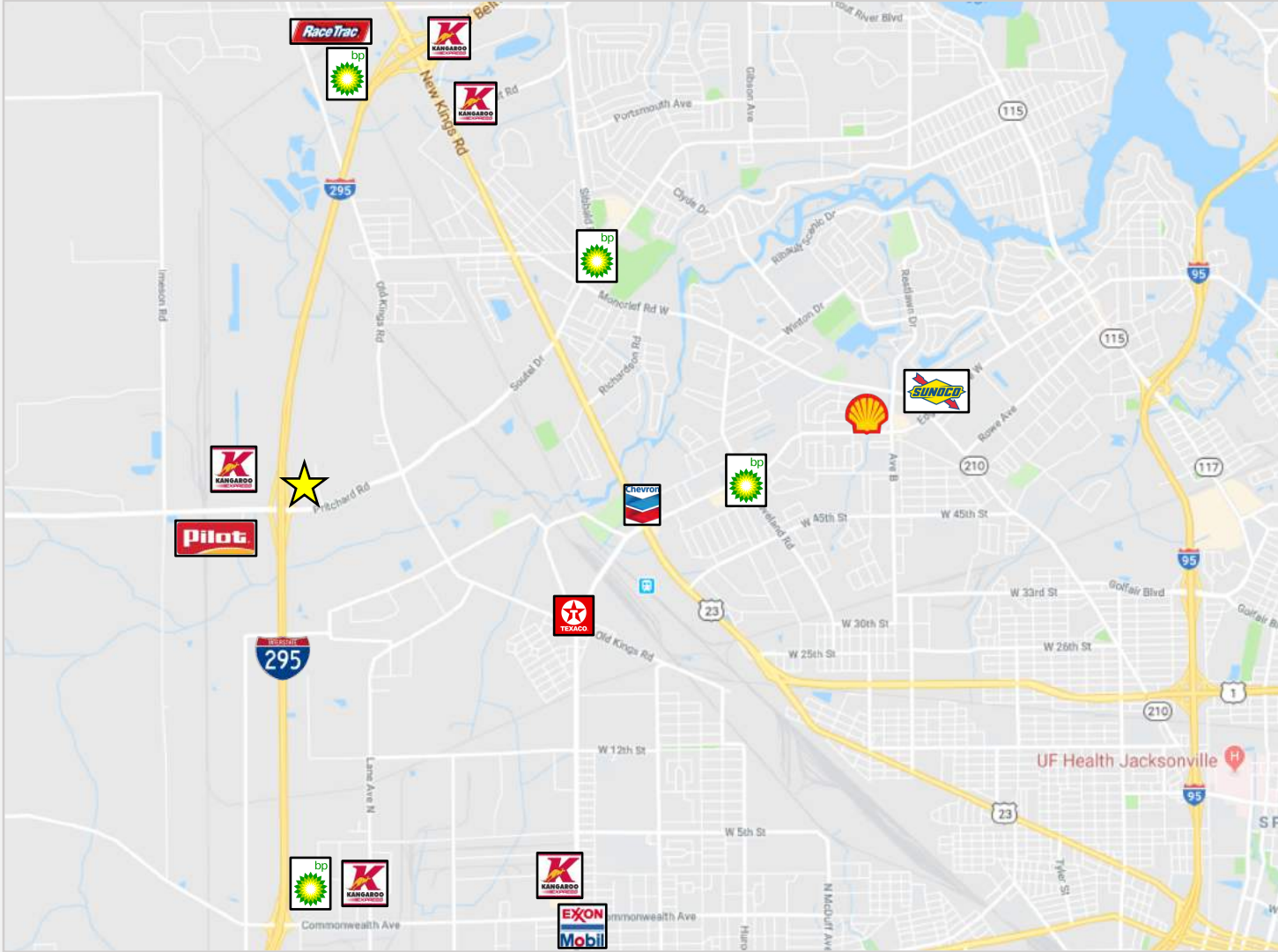
Located at the I-295 and Pritchard Road Interchange



PERIMETER PARKWAY OUTPARCELS



Gas Stations



PERIMETER PARKWAY OUTPARCELS



Quick-Serve Restaurants

